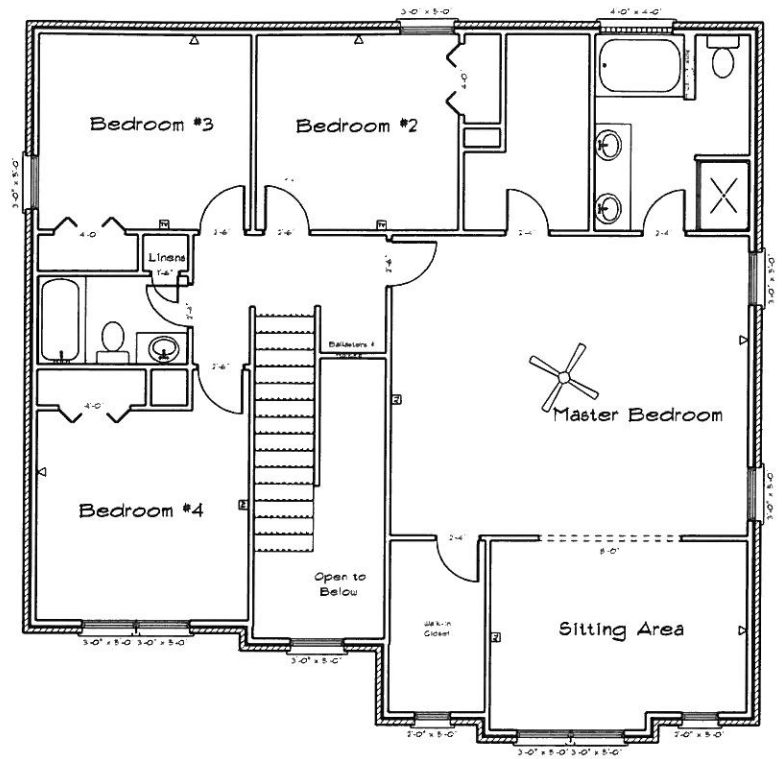


1st Floor



2nd Floor

Dryden Enterprises, Inc.
 101 West Court Street
 Hinesville, GA 31313
 (912) 369-7634

NAME	AREA
1st Floor	1069 sq ft.
2nd Floor	1369 sq ft.
Total Heated	2438 sq ft.
Garage	416 sq ft.
Porch	88 sq ft.
TOTAL	2942 sq ft.

Ivey

Scale - 1/4" equal 1'
 Rev. - 20 November 2013